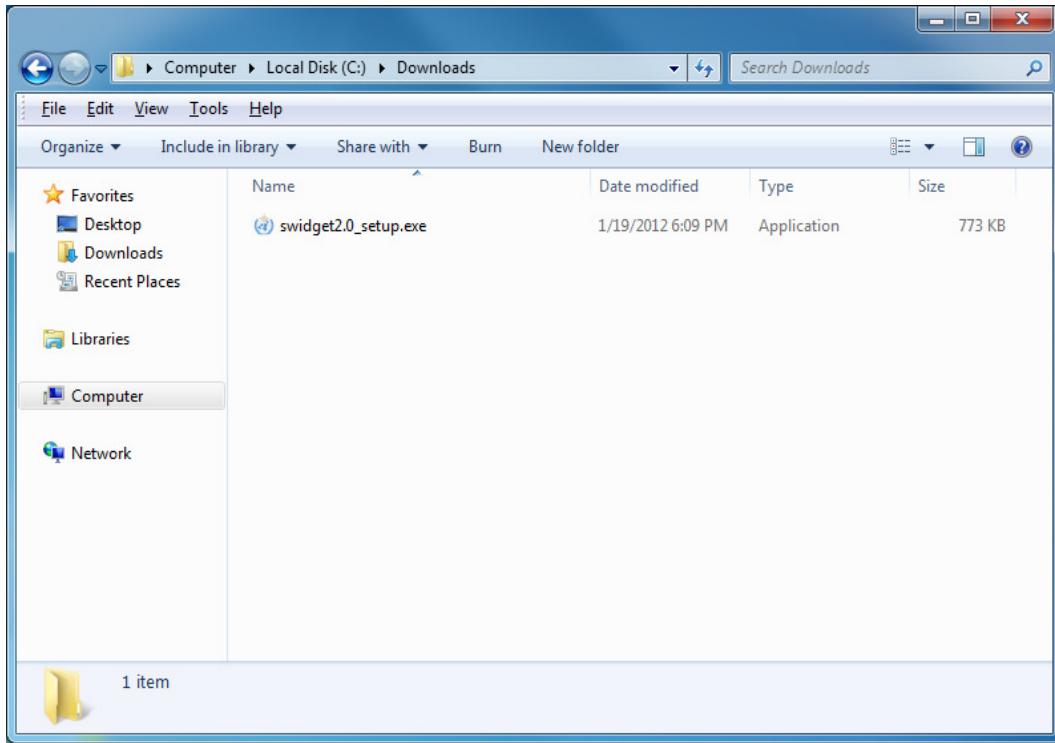


SWidget 2.0 Installation Guide

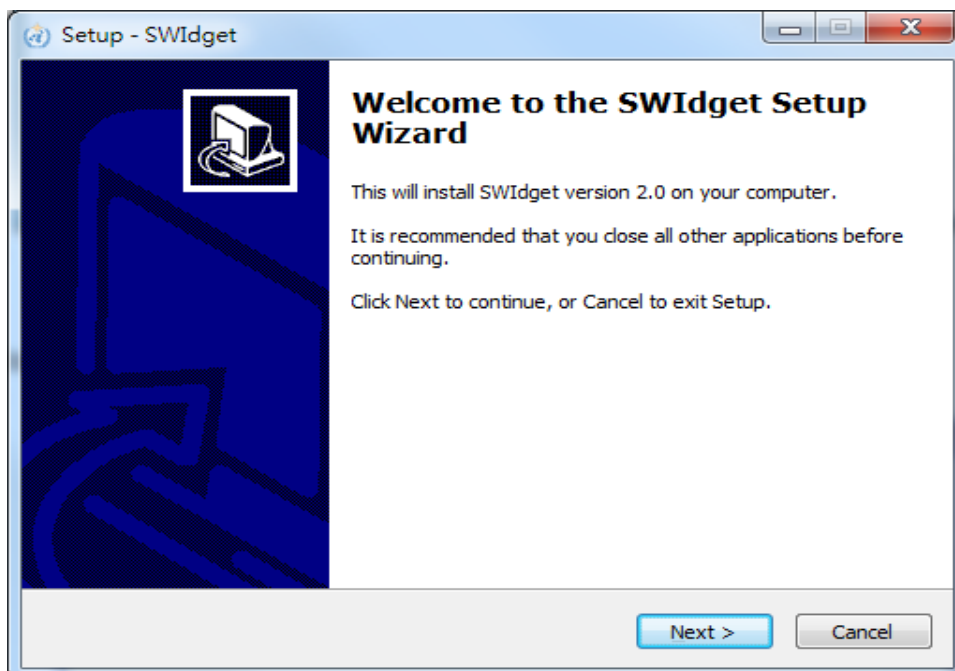
Installation – New User

Step 1 – Unzip download file ‘swidget2.zip’
(The program can be downloaded from
<http://severe.worldweather.wmo.int/swidget/swidget2.zip>)

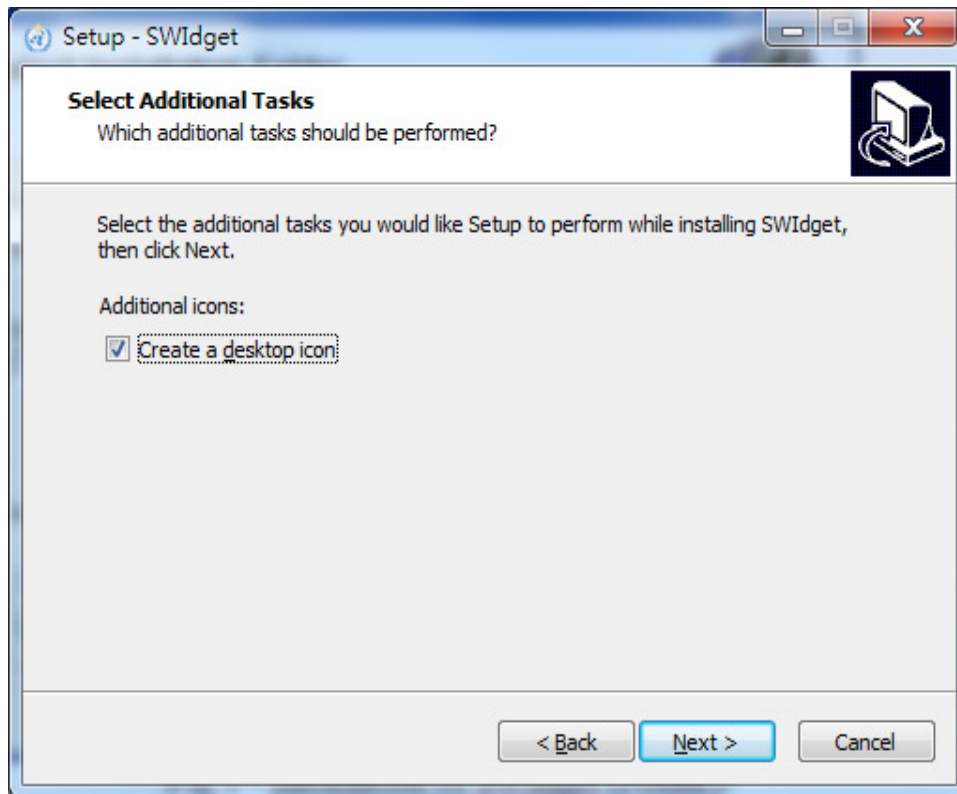
Step 2 – Run swidget2.0_setup.exe



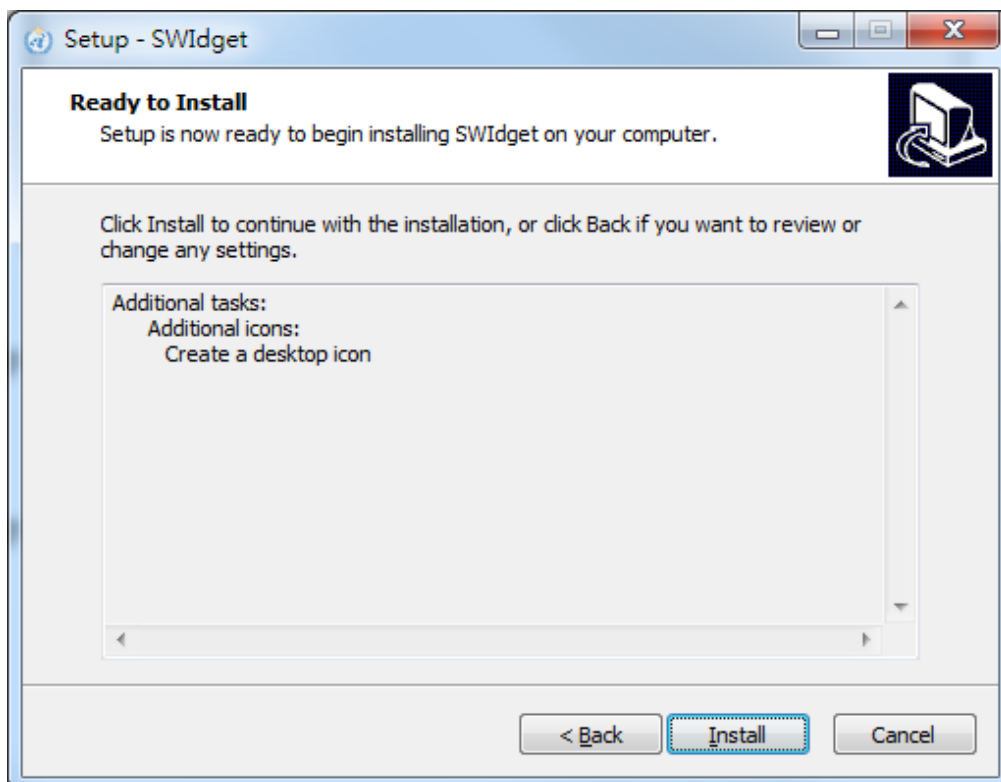
Step 3 –Click the button “Next”



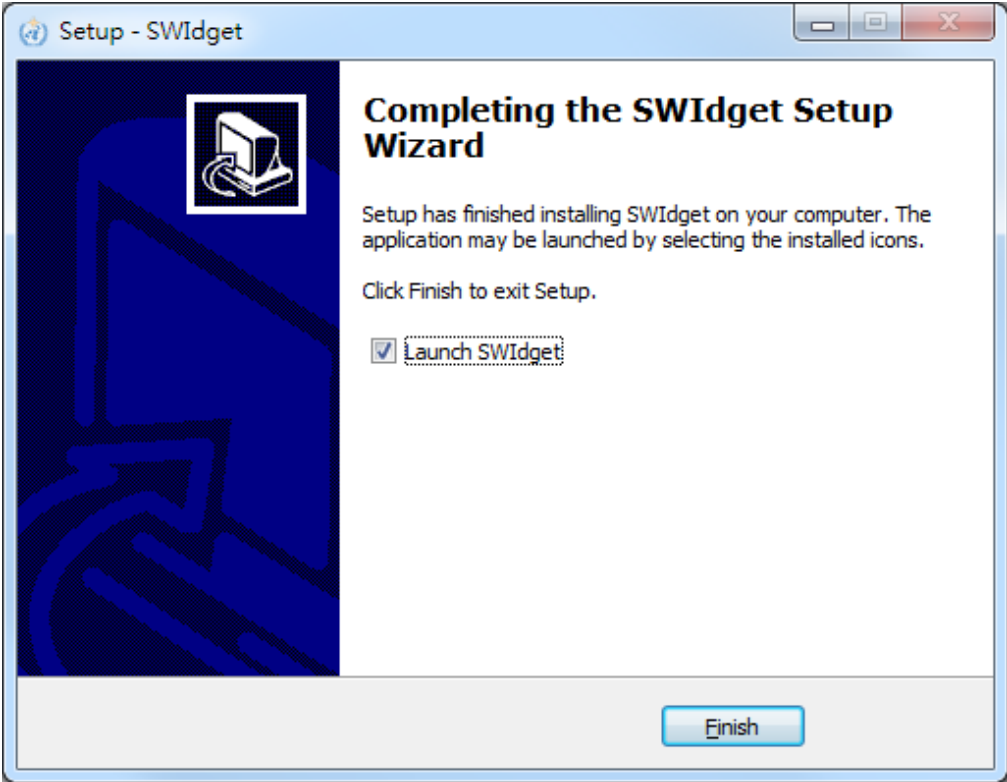
Step 4 – Create a desktop icon if necessary



Step 5 – Click install



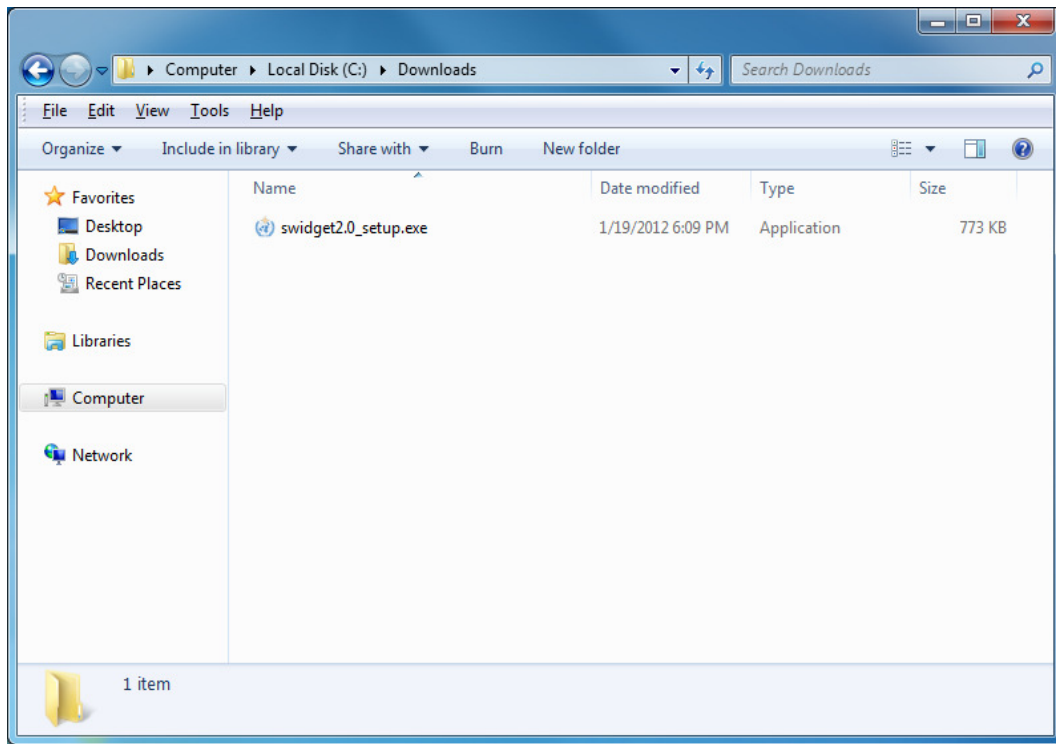
Step 6 – The installation is completed



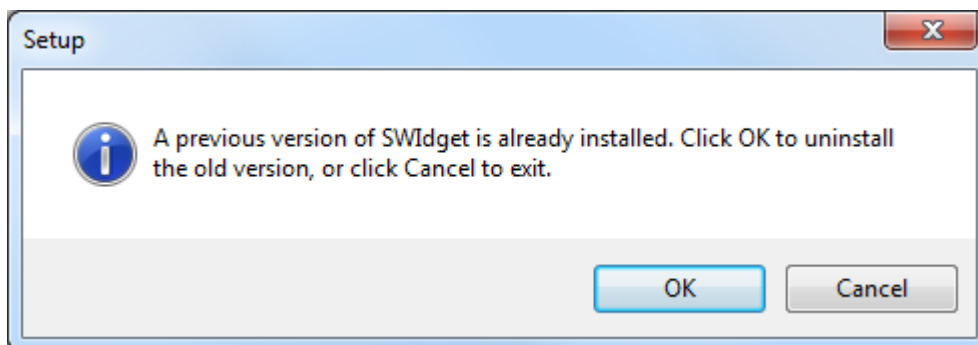
Installation – Existing User

Step 1 – Unzip download file ‘swidget2.zip’
(The program can be downloaded from
<http://severe.worldweather.wmo.int/swidget/swidget2.zip>)

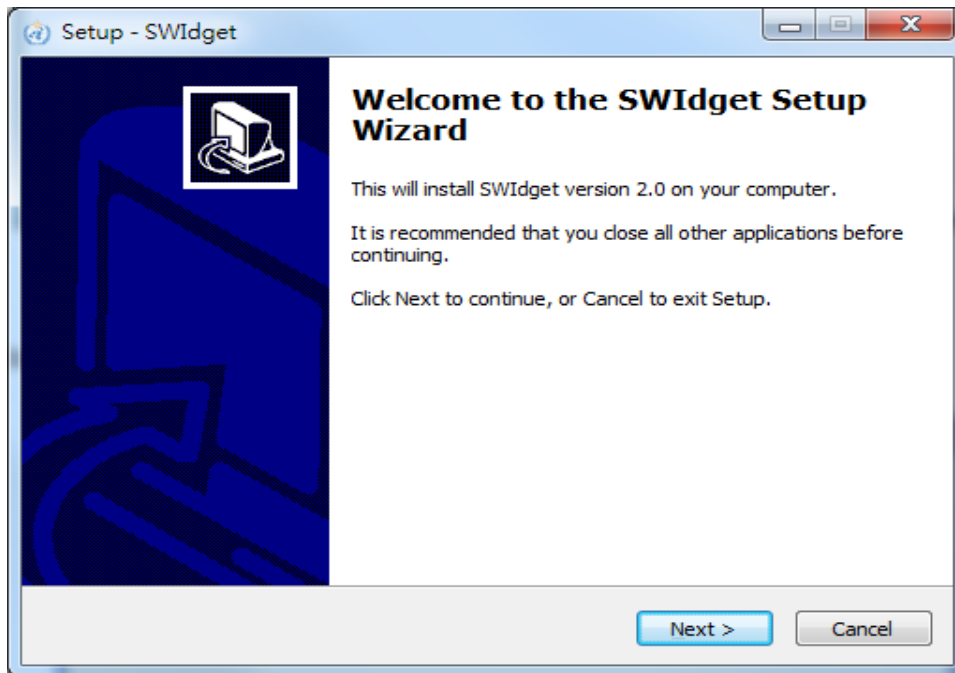
Step 2 – Run swidget2.0_setup.exe



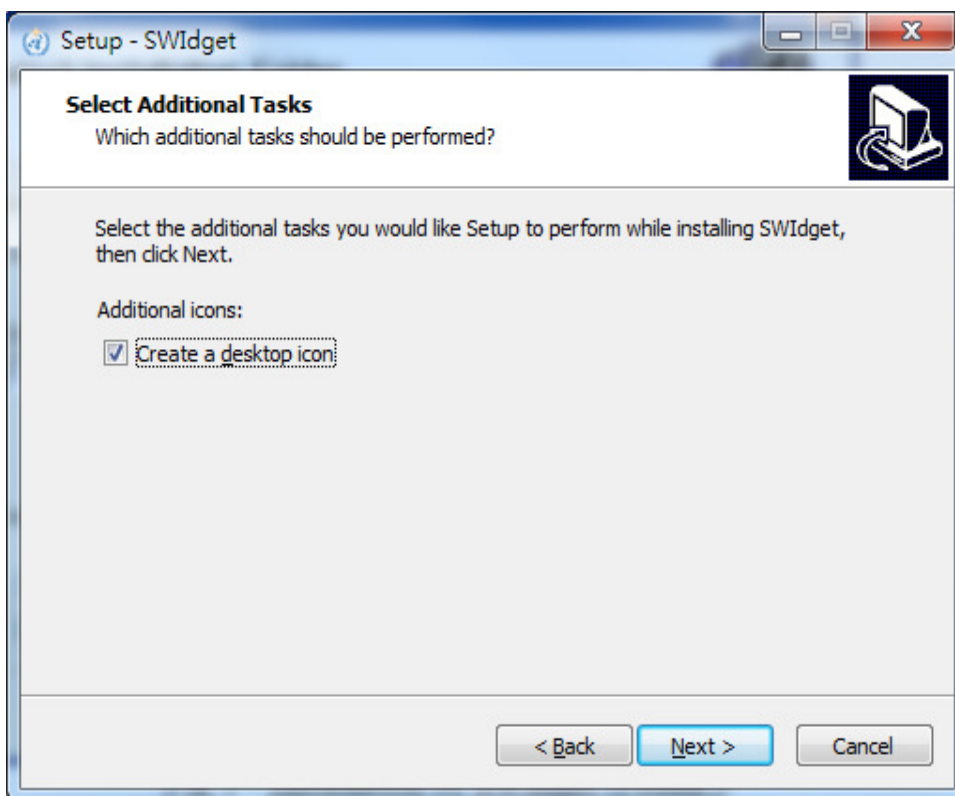
Step 3 – Remove previous version (for existing user with version 1.0)



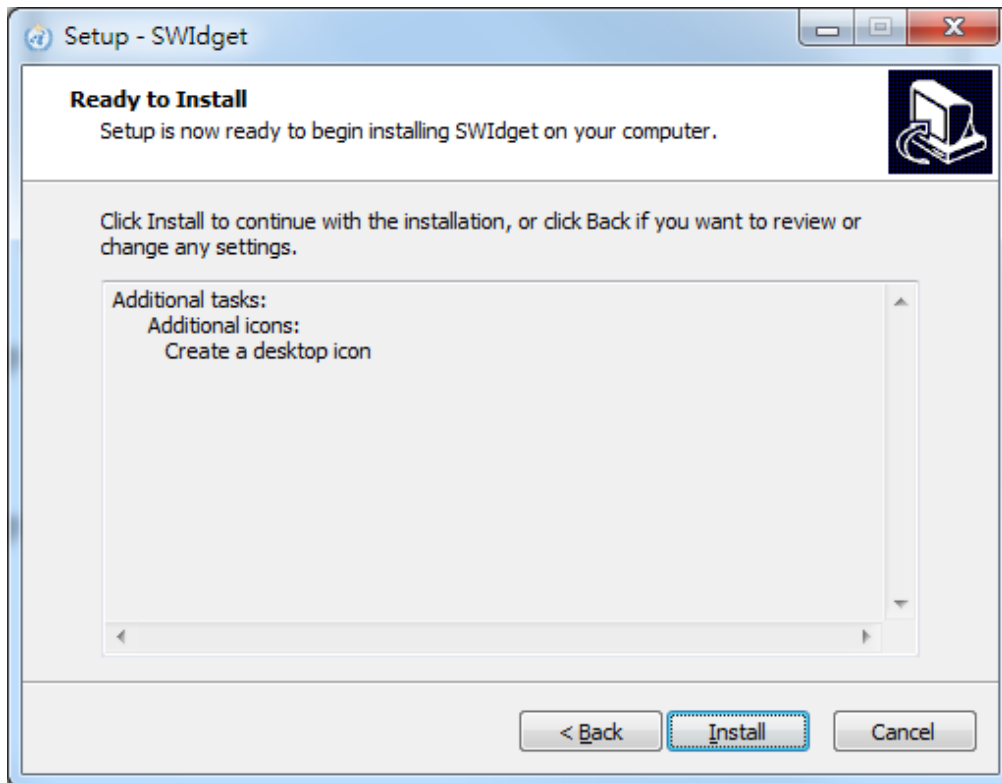
Step 4 – Click the button “Next”



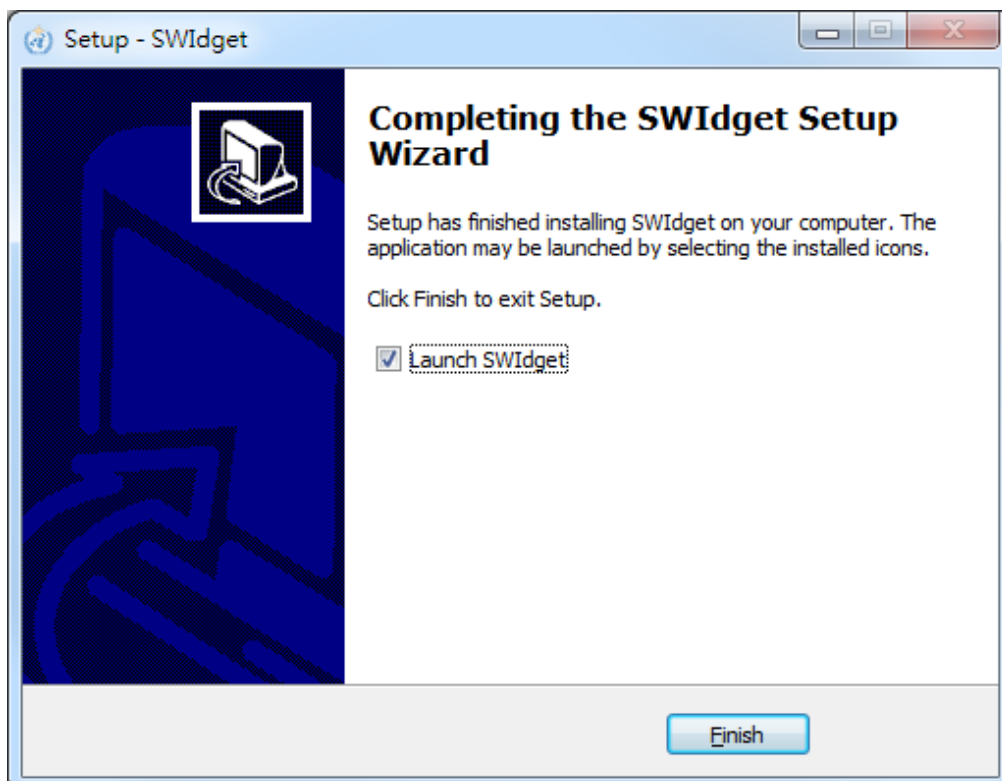
Step 5 – Create a desktop icon if necessary



Step 6 – Click install

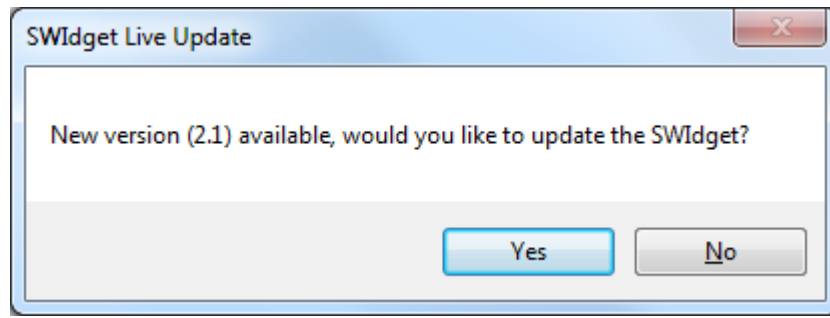


Step 7 – The installation is completed



Live update for future version

You will be prompted automatically if there is any further upgrade.



Uninstall SWidget

Step 1 – Run the SWidget Uninstaller
(Start → ALL Program → SWidget → Uninstaller)



Step 2 – Click “yes” to confirm uninstallation

