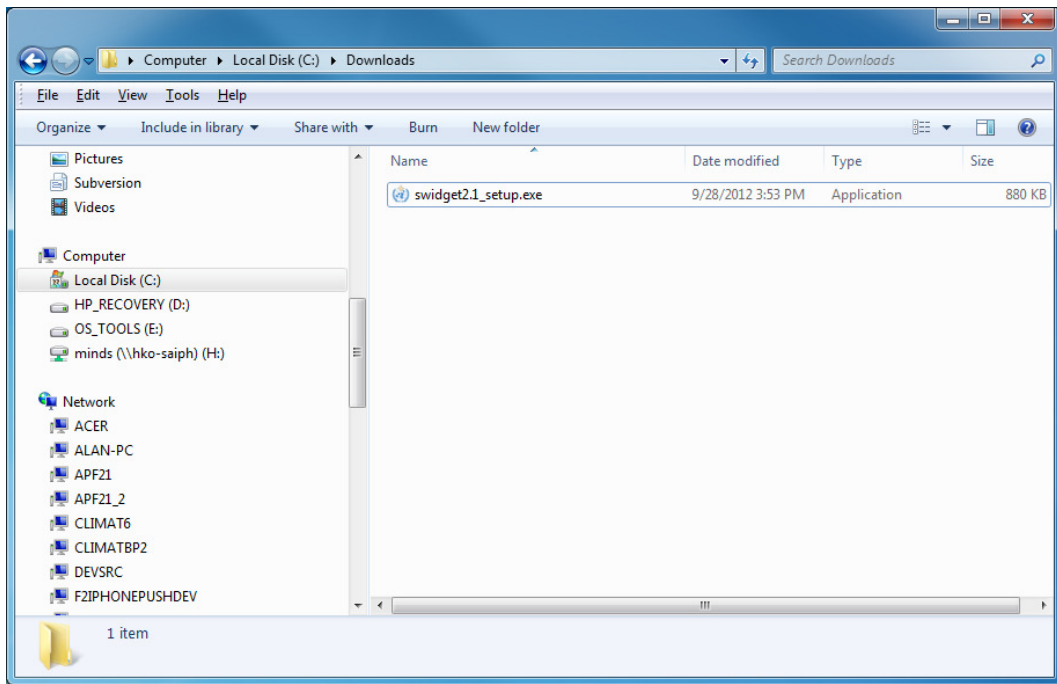


SWidget 2.1 Installation Guide

Installation – New User

Step 1 – Unzip download file ‘swidget2.1_setup.zip’
(The program can be downloaded from
http://severe.worldweather.wmo.int/swidget/swidget2.1_setup.zip)

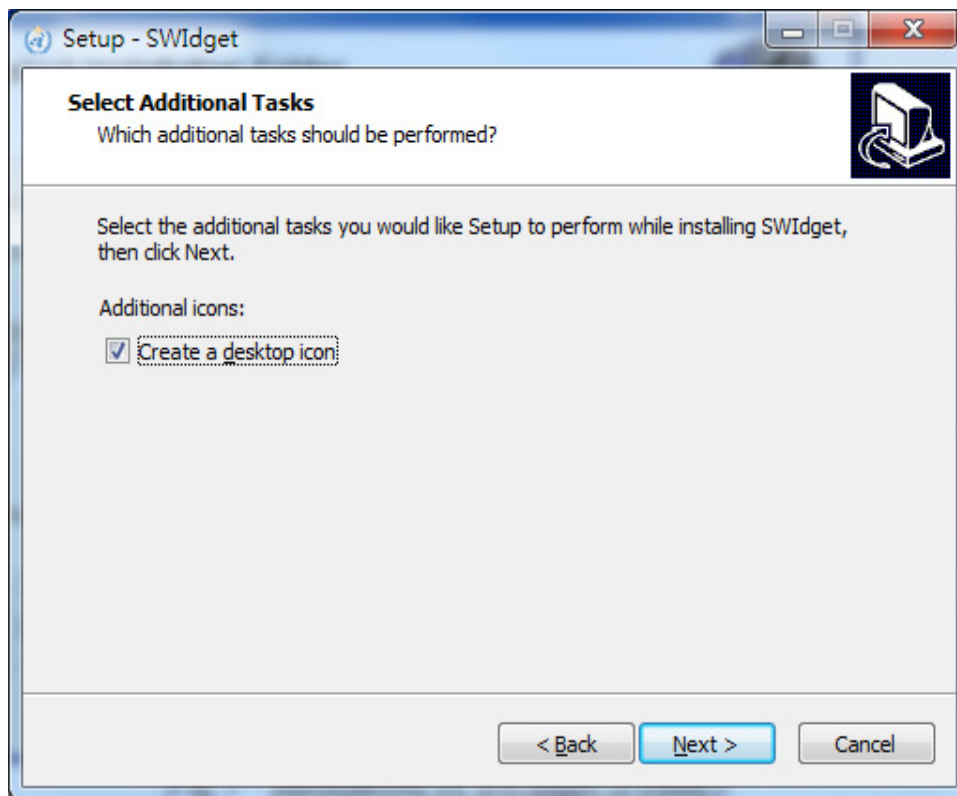
Step 2 – Run swidget2.1_setup.exe



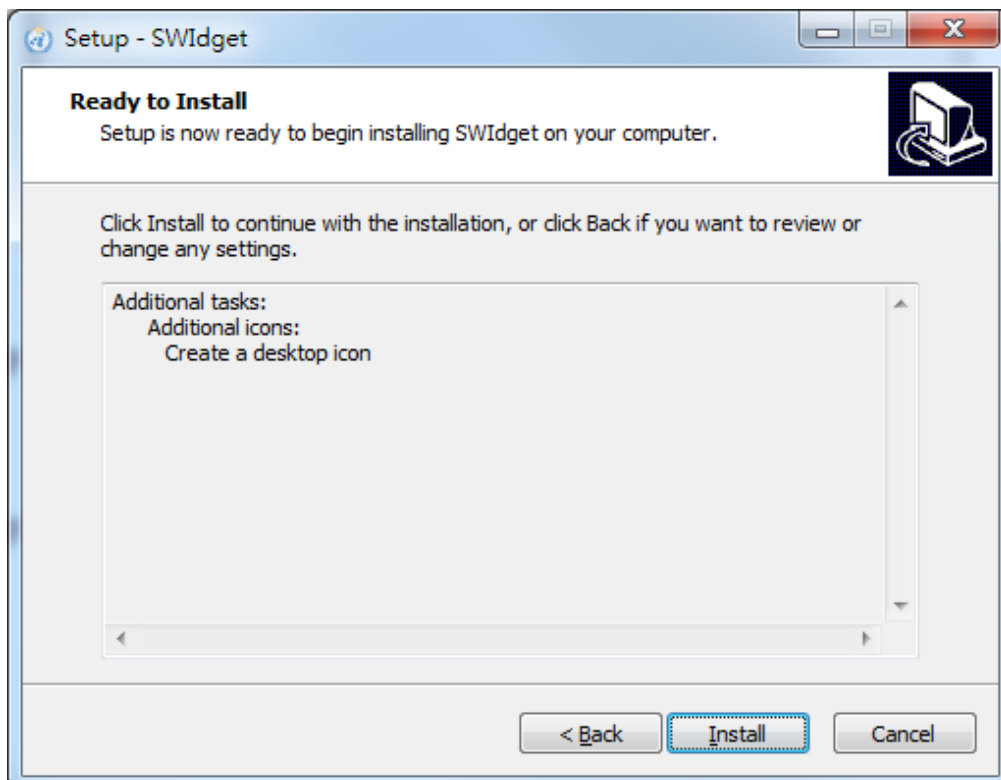
Step 3 –Click the button “Next”



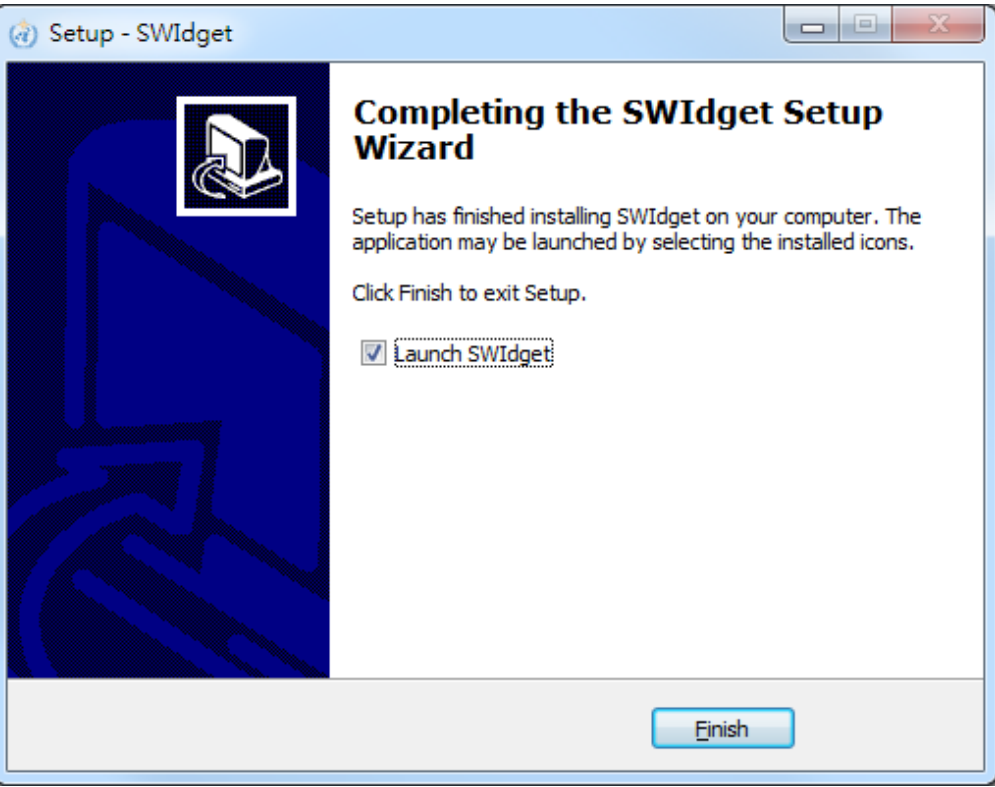
Step 4 – Create a desktop icon if necessary



Step 5 – Click install

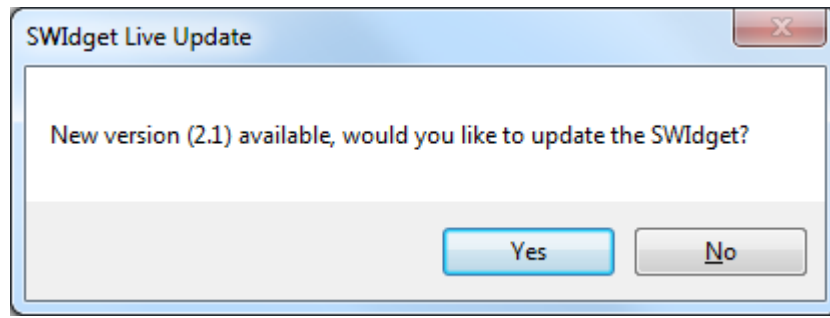


Step 6 – The installation is completed



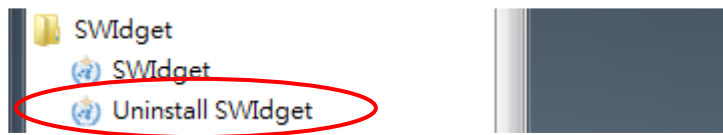
Live update for future version

You will be prompt automatically if there is any further upgrade.



Uninstall SWidget

Step 1 – Run the SWidget Uninstaller
(Start → ALL Program → SWidget → Uninstaller)



Step 2 – Click “yes” to confirm uninstallation

