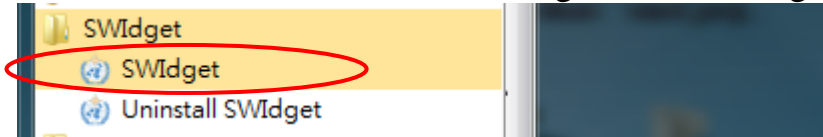


SWidget 2.1 User Guide

1. Activate the SWidget program

Windows “Start” menu → ALL Programs → SWidget → SWidget



WMO icon appears on the toolbar



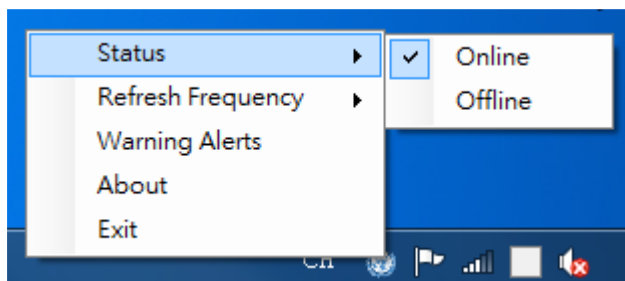
2. Setting

Right-click the WMO icon to personalize the setting according to the user’s interest

2.1 Status:

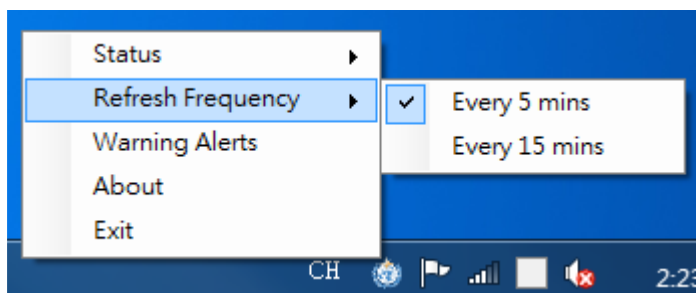
Online: Put SWidget online

Offline: Put SWidget offline



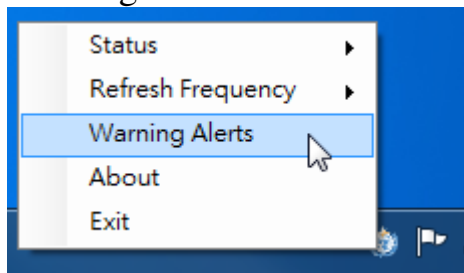
2.2 Refresh Frequency:

Choose the update frequency between 5 and 15 minutes



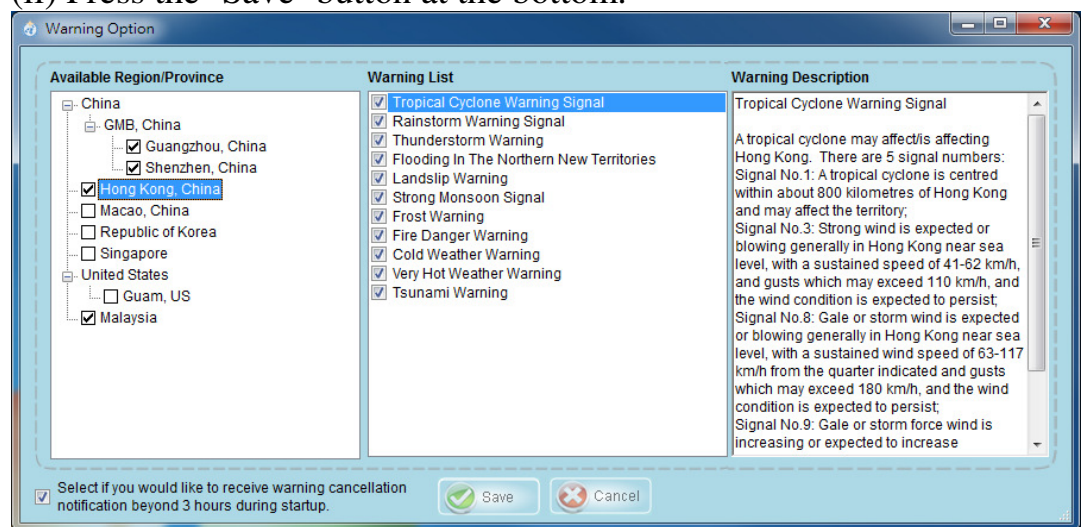
2.3 Options

2.3.1 Warning Alerts



2.3.1.1 Pre-define the warning alerts to be received.

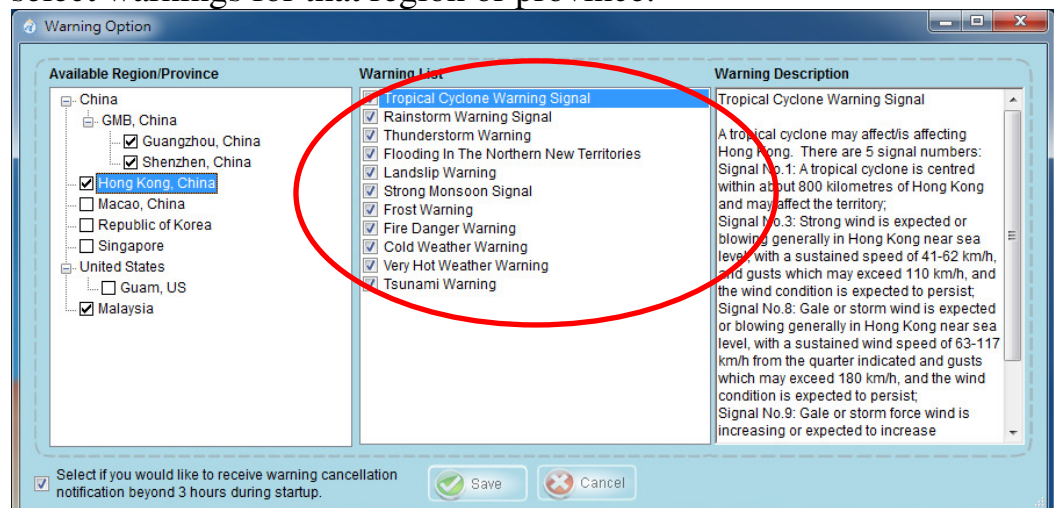
- (i) Tick the checkbox under the first column 'Warning List' to select the warnings.
- (ii) Press the 'Save' button at the bottom.



2.3.1.2 Remove warning alerts from the 'Selected' list

- (i) Un-check the member from the first column.
- (ii) Press the 'Save' button.

2.3.1.3 (i) Tick the checkbox under the second column 'Warning List' to select warnings for that region or province.



(ii) Press the 'Save' button.

3. Display

After choosing user's preference, the toolbar will display the SWidget icon, together with icons for the selected official weather service.



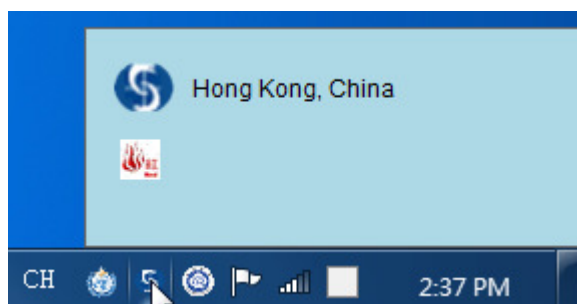
① SWidget Icon

When you right-click this icon, settings such as refresh frequency, options, is displayed.

② Icon(s) of Meteorological Organizations participating in SWidget project

When you put a mouse over one of these icons, current warning information is send from the respective Meteorological Organization.

3.1 Mouse over the icon for a selected official weather service, the warning status of the region, if any, will be displayed.



3.2 When there is any change in warning status, a pop up window will be displayed on the user's screen.



3.3 Double-click a warning icon, it will link to the official weather service's webpage for which details of the warning will be displayed.